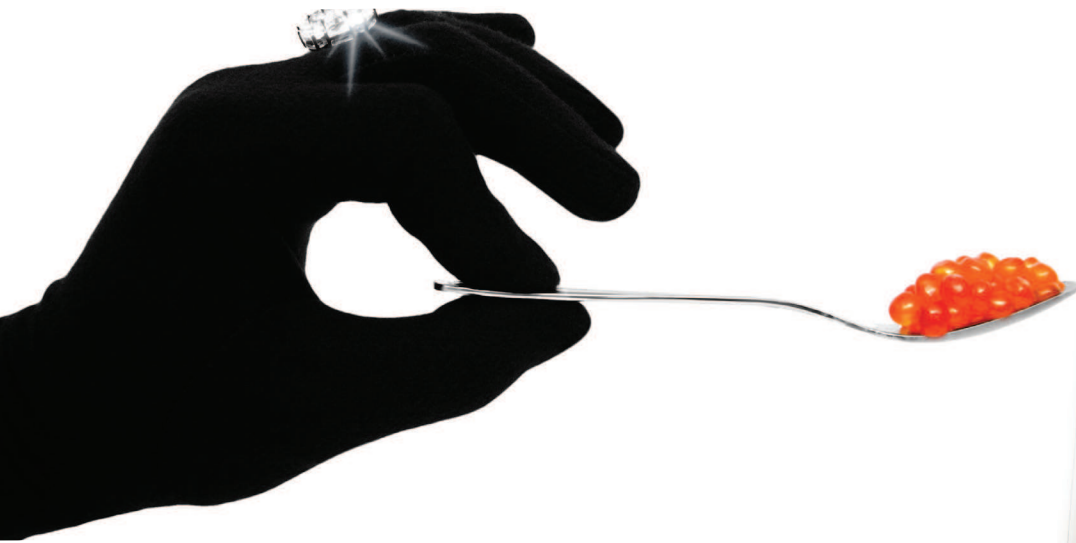


unique automation

То, что не для всех



This is a terraced house like any other with slightly more reflective windows than the neighbouring homes to hide the technological treasures within the home.

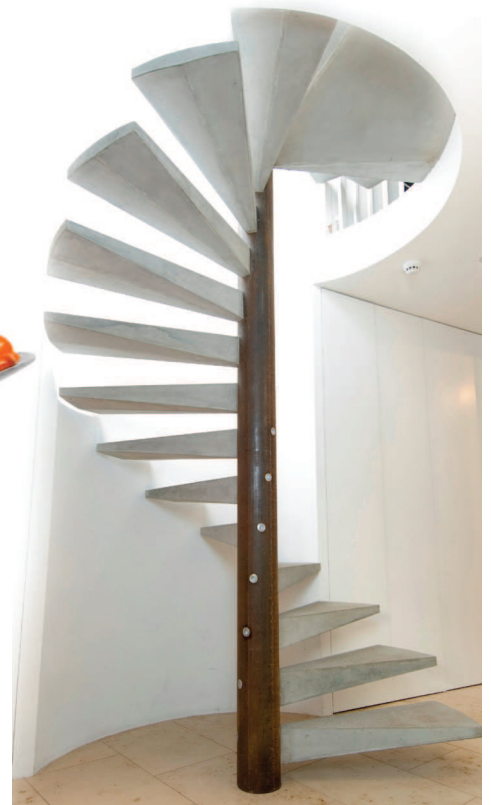
The task was to create a demonstration facility representing the 21st century bachelor pad, integrating all available technology for home comfort and entertainment.

The house was previously occupied by offices, built to a high specification with no concrete spared. Removing the screeds, staircase and floors resulted in tens of tons of high grade steel reinforced concrete rubble. The noisy part of the work could only be completed outside of office hours, which prolonged the building works. The project took 9 months to complete with further refinements taking a further 3 months.

The original windows were kept and altered and the glass packs replaced on the lower floors with a combination of bandit resistant glass and self-cleaning glass and the upper floors with energy saving glass and self-cleaning glass.

The floor coverings were intended to be low maintenance, demonstrating variety and layered over a wet Under Floor Heating system. The ground floor was intended to be stone. The chosen stone was Mocca Cream, which is one of the hardest limestones available. The desired floor pattern required the purchase of stone with a special size to suit. The order was placed directly with the quarry and few matching slabs were

ordered for cladding the walls of the ground floor shower room. The sub floor was insulated and then a metal grid was put in place to hold the UFH pipes followed by the installation of the Mocca Cream. The shower room



had to have a wet floor and the pattern needed to be maintained throughout which resulted in the installation of the stone tiles with an overall gradient but with misaligned edges, which were later ground to allow for the floor to have even surface, whilst retaining whole tiles and the all important drainage.

The main challenge to the UFH systems was the installation of timber floors over. The first floor of the property features a floor of English Oak planks 200mm wide. The timber was a challenge on its own, but the wider the individual pieces the more difficult

to keep them from shrinking. The sub-floor was insulated with 50mm high grade insulation between wood planks positioned at 170mm centres.

The planks were laid proud of the insulation to allow for aluminium heat distribution plates to be installed. These plates are specially formed to keep the running pipe wrapped around and dissipate the heat over the entire surface of the plate and eliminating hot and cold spots. Over the aluminium plates a ply layer was installed and well secured with thousands of screws to the wood planks. The ply is thin and the wood planks have small centres giving

unique automation

a solid base for the oak flooring. The English Oak planks were then secured with special grade heat resistant parquet glue and nailed in position with panel nails.

The Second floor features similar UFH technology to the first floor with floor

in the house four times an hour, with minimal energy loss, maintaining the heat in the winter and the cold air from the air conditioning systems during the summer. Furthermore, the air is filtrated to stop particles from entering the property and clogging up the system. This type of environment

house through a third valve. The water is centrally purified and distributed around the house through a separate delivery system, supplying water also to all appliances, ice maker in the fridge and coffee maker.

You enter the property through a



coverings of carpet in the bedroom and dressing room and tiles and solid teak in the master bedroom.

A primary consideration for the house was to be put in place sufficient and appropriate wiring. All lights were run to central points on each floor, all sockets were zoned and run to the consumer unit and numerous points around the house were connected to the location of the central control area. Not less than 30 km of cable was run in this 150sq.m. house.

Every room has at least three zones of lighting and LED mood lighting panel, stereo speaker system, blinds and shutter control, ventilation and heating control as well as additional features like curtains control for the master bedroom.

The air quality health of every house is a critical component of the whole environment. The house is equipped with a Heat Recovery System capable of replacing the entire volume of air

is not only beneficial for asthma and allergy sufferers but benefits everyone by raising the threshold of fatigue and bringing more oxygen into the blood flow. It has improved effect on sleep too. Air is pumped into the house utilising the inside components of the air conditioning system and is extracted from the bathrooms through motorised air vents and the kitchen extractor vent. When cooking is detected the HRS goes on to boost which increases the volume of air circulated and, no matter what you cook, minutes after cooking all odours are gone and only the beautiful food left to enjoy. The HRS also follows other activities in the home. The automated fireplace has a power output of 14kW and when operational burns a lot of oxygen. The HRS is activated on lighting the fire to allow for extra oxygen and the removal of any CO2 that may be discharged by it.

Another addition to create the perfect environment is drinking water that is available at every water facet in the

strengthened door with motorised multipoint locking mechanism. A single key allows access and the door handle lever does all the unlocking through complex mechanics. Should a visitor need access the lock is activated from



unique automation

any location in the house.

As you enter the house the sound of beeping reminds you that the alarm system needs disarming. By using a personalised tag you let the system know who has arrived. Personal identification on entry means that the

consequently the blinds and curtains opened or closed. The system is fully compliant with the toughest NACOS requirements and has dual signalling to the Police and a zone mimicking ability to differentiate interaction with the system. For example, if someone tries to break a window when you are not

method and custom made LED lights fitted to illuminate the staircase during the night as ambient light, allowing safe movement around the house without the need to turn the main lights on.

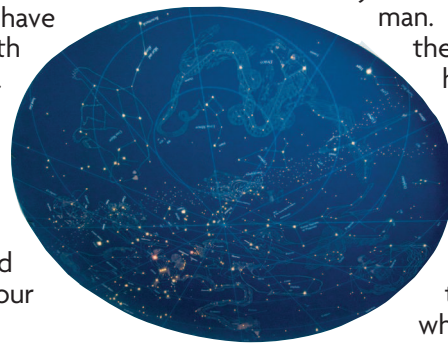
The hallway is open and light even though it is windowless and situated



house may be instructed to perform specific tasks if required. Music can be played, the environment can be changed to reflect temperature preferences, the light levels could be altered depending on the time of day you have arrived and

at home the aluminium shutters on the ground floor go down as a deterrent to the invader. When you leave the house, on setting the alarm you can have the curtains drawn or have the house set in holiday mode, when human presence is mimicked by some systems. A very useful application is to use the alarm sensor mimicking to control the sound system and have the music travel with you around the house. You move from one sound zone to another and the music travels with you bringing the best quality possible and least disturbance to your neighbours.

in the middle of the house. All doors in the house are made to a design inspired by Japanese parchment doors and windows with minimalist frame and as large parchment like windows. Even with all doors on the ground floor closed it feels spacious and light.



The hallway is spacious with an elegant open staircase. The staircase was made in situ and every step in high grade steel reinforced concrete was cast with a washed away top to prevent slipping. The steps are fixed used a unique

Today's bachelor is a very busy man. The first room on the ground floor is the home office with custom furniture, all the necessary equipment to continue work from home and afternoon bed for the rare occasions when an afternoon nap is required! A pair of

curved doors keep this area almost completely open to the hallway merging the space and benefitting both areas. The room benefits from air conditioning, HRS, wet UFH, three zones of lighting, mood lighting, sound

unique automation

zoning, door entry systems with the wall controlled console, blinds and black out/security shutters. The best part of all this is that none of the technology is visible apart from the flash aircon and wall control console. The wall control console is an interface to the door entry

sources such as sounds from another room or the telephone.

Through the hallway you enter the guest bedroom which is plain with little sign of technology apart from a recessed deep blue circular sky like ceiling. This

The ceiling is of glass construction and all lights, including the mood light, are hidden keeping the room as minimalist as possible with the exception of ceiling speakers and the electric ventilation outlet.



system via build in microphone and the sound from the door distributed by a matrix switcher is played by the speakers. Naturally control of the door could be authorised from there. From the wall control console a sound source can be selected from dvd, radio to other

was custom made showing the north winter sky with accurate positioning of the constellations and the Milky Way, which is even correctly installed in line with the Earth's magnetism. With a compass you can get directions in the dark, should anyone wish to use it for educational purposes. The room has the same technology as the home office apart from motorised beds that come down electrically when guests come to stay. Opposite the beds is custom made furniture, featuring desk area and double wardrobes. This is hidden by sliding doors, which convert the wall into a multifunction centre. For privacy the guest shower room has a door to it. Two doors lead to the shower room, with simple electronics to monitor when one door is open and shut the other. When the room is in use a button activation locks both doors.

The shower room has a stone floor and stone walls. On inspection these show a map of prehistoric life with countless fossils which are millions of years old.

The shower room has a stem generator converting it into a therapeutic area and a custom radiator which work on an algorithm, which has humidity and temperature functionality to ensure the towels are always dry.

Taking the stairs to the first floor you enter into the heart of the bachelor pad facing the comfort zone. Comfortable furniture allows prolonged exposure to the luxury of automation without the need to move! The entry point of control is an AMX wireless touch screen interface. At the touch of a button you can watch your favourite movies on a 180 inch. Should you chose to watch a movie on the big screen with the touch of a button a lift lowers a projector from within the ceiling, a 3.7 meter wide screen starts to unroll from within the ceiling and speakers six and seven drop from the ceiling on the opposite side. The lights dim and the blinds turn to reduce external light when viewing during the day. Various other activities are slowed down to reduce noise for a



unique automation

truly cinematic experience. Hundreds of favourite movies and sound track are stored in their native format on an AMX MAX server. The media content is then played on any display or projector in the house. When the big screen is not used for the cinema it

kitchen such as dishwasher and large hob. The technology works well here also, when the hob is on the ventilation system goes to boost, extracting through a curved extraction vent all unwanted odours and steam from cooking. The house never smells of

as focal point with a further view of Greenland Dock. The bath is equipped with the bathomatic bath management system, providing full control over the internet and the home automation system. Arriving home to a perfect



displays nature scenes accompanied by suitable music, transforming the living space into a recreational observation zone bringing you close to nature and relaxation. When no longer needed the equipment retreats leaving no sign of the technology.

For every day TV viewing at normal lighting conditions a Plasma monitor is disguised in the suspended fireplace chimney breast. The plasma rotates allowing different viewing angles and with it the sound at 90 to allow correct sound accompaniment. The 14kW fireplace could accommodate suitable movies to bring extra warmth.

You turn around in the living space and face the dining/kitchen area a large fish tank block of stainless steel disguises the working parts of the kitchen. All the fish tank processes are automated to ensure the fish stock is kept healthy and looking good. All appliances are in stainless steel featuring combination appliances fan oven – microwave, van oven – steam oven, fridge – freezer – wine cooler – ice maker, coffee maker and all others found in the modern

cooking and the air is fresh and clean. The area features 14 zones of lighting, aircon, RGB mood lighting and wet UFH. All aspects are monitored by a wall panel with the necessary sensors. The furniture is custom built with unique features like an envelope dining.

Moving further up the stairs you arrive at the second floor with its soft carpet, smooth wall and Japanese style doors welcoming you to a further comfortable living area. The master bedroom is equipped primarily with technology providing environmental controls such as mood lighting, temperature, curtains and global house functions such as all house lights off/on. All furniture is custom made to suit the requirements of the house.

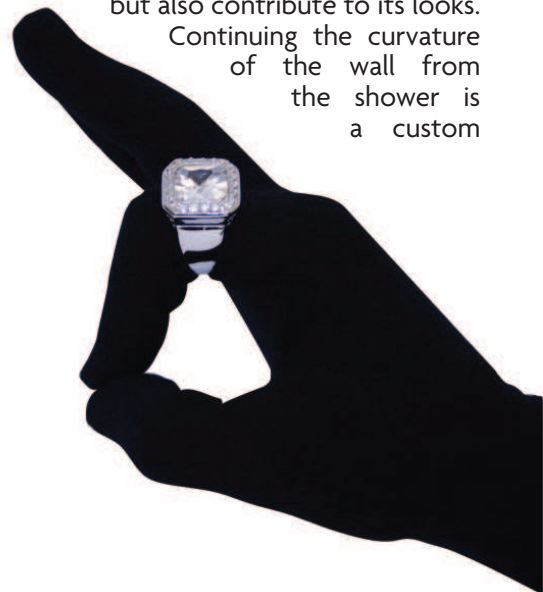
Next to the master bedroom is a dressing room. Lebanese cedar wood doors open a cupboard space for shirts and trousers. The wood provides a natural aroma, amber colour and is also insect repellent.

Next is the bathroom. A small room with a centrally positioned bath acting

bath or running a bath from the study is now a reality. The system can also add perfume and bubble bath. The floor is in solid teak which, in addition to its beautiful colour, is water resistant and easy to clean.

On the right is a unique shower arrangement built from hundreds of custom tiles allowing the shower to be not only a useful part of the room but also contribute to its looks.

Continuing the curvature of the wall from the shower is a custom



UNIQUE automation

radiator designed to hug the wall with minimal projection and the perfect size towels. This room is no exception and features sound zone, environmental control, multi-zone lighting, water proof bath0vision TV, etc.

On the second floor landing there is active display from the AMX allowing full graphical access to the system with it all media sources and control options. You can view CCTV images, access the Internet or simply look at the face ringing your door bell and allow them to enter the house.



UNIQUE AUTOMATION

www.uniqueautomation.co.uk

12-14 Orion Business Centre
Surrey Canal Rd
London
SE14 5RT

t: 020 7740 3913
f: 020 7232 0972
m. 07939 00 54 53

